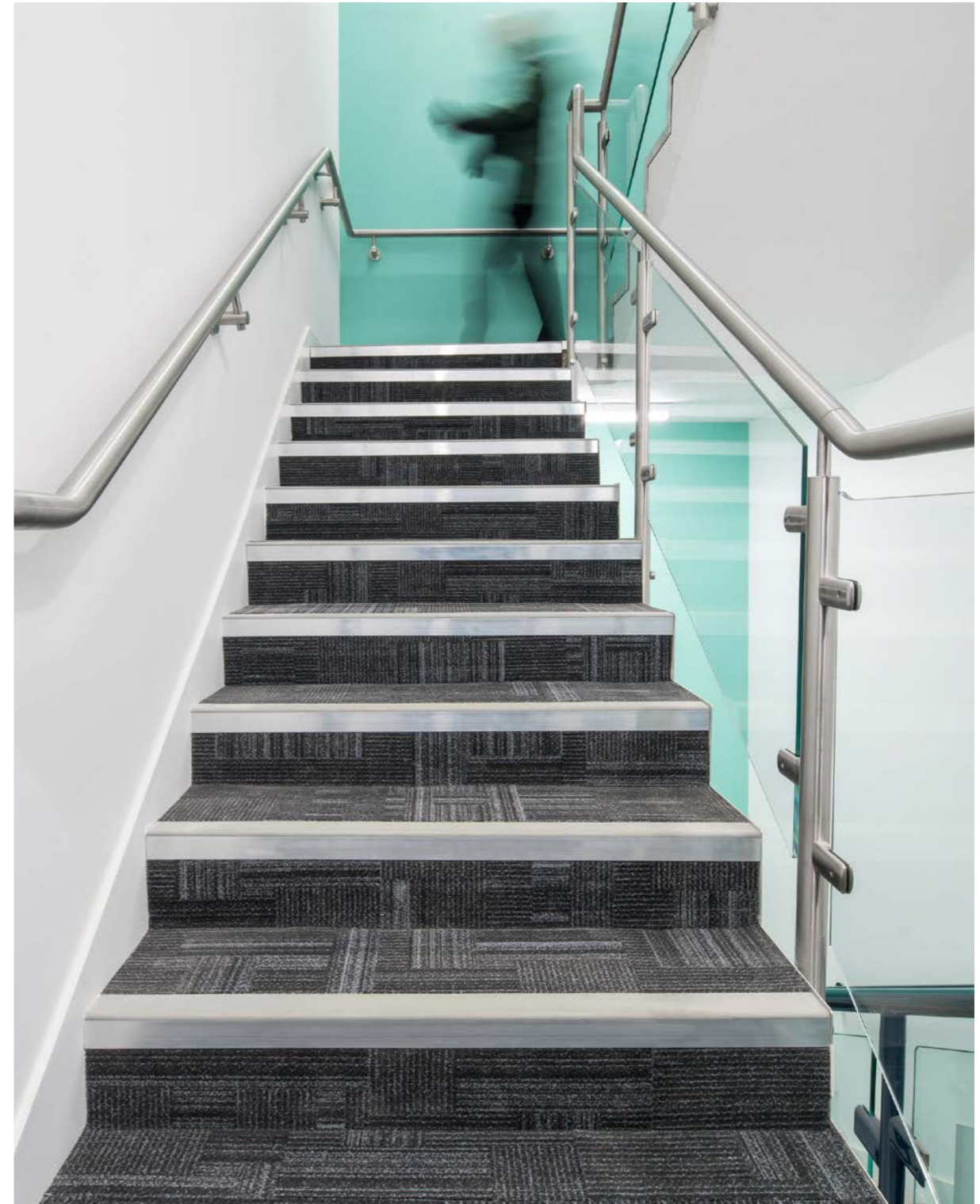


### Group

Project: Steel City House

Commercial Office



“The restoration of Steel City House has created a thriving business hub in the heart of Sheffield. Gradus were able to provide a choice of colour and had the design options that allowed us to achieve a modern flooring scheme, while still complementing the heritage of this period building. The Gradus products selected provide the perfect balance between practicality and aesthetics and we're really pleased with the finished outcome.”

John Scotting  
Managing Director of Scott's Developments Ltd

As part of an extensive refurbishment project, Gradus provided a range of flooring accessories to enhance the interior and provide safe access for users at Steel City House, one of Sheffield's most iconic buildings.

Installed throughout the corridor and atrium areas, Gradus Times Square carpet tiles offer versatility and creativity, as well as excellent acoustic properties and being hardwearing and durable enough to cope with large volumes of foot and wheeled traffic. Times Square is designed to be installed randomly on the floor reducing installation time and wastage and allowing easy replacement of individual tiles as no pattern matching is required.

As the building will experience a large amount of foot traffic, Esplanade 5000<sup>HD</sup> Primary Barrier Matting was installed in three main entrances and one rear entrance in the colourway Jackdaw (black). This high-performance barrier matting improves safety by reducing the risk of slip accidents caused by wet flooring. It also helps to reduce cleaning and maintenance costs, while protecting the appearance and prolonging the lifecycle of adjacent floor coverings.

To define the step edge and ensure safe access for all building users, ADXT3 stair edgings were specified on all staircases. ADXT3 is part of the Gradus market-leading XT range and comprises an aluminium channel with a slip resistant insert that extends around the leading edge of the profile. This ensures that foot contact is always made with the slip-resistant element of the stair edging for improved user safety.

# GRADUS

## Case Study

### Group

Project: Steel City House

### Product Specified:

- Times Square Carpet Tiles – Colour: Grey 06601
- Esplanade 5000<sup>HD</sup> Primary Barrier Matting – Colour: Jackdaw
- ADXT3 Aluminium Stair Edgings

Commercial Office

